



# **Beyond the APIs Using Interoperability to Make Meaningful Connections**

**Molly K. Marra – Director, Maryland Medicaid Provider Services**

**Mary Pohl – Senior Advisor, Chesapeake Regional Information System for Our Patients (CRISP),  
Maryland's HIE**

**David Finney – Partner, Leap Orbit**

**Aaron Seib – VP of Innovation, Onyx**

**August 10, 2021**

# What is Interoperability?

---

- Four key requirements of the CMS Interoperability Rule\*:
  - **Provider Directory API (7/1/21)** – Makes provider directory information publicly available via a standards-based API, enabling developers to access information and create services in order to help patients find providers for care and treatment.
  - **Patient Access API (7/1/21)** – Allows patients to easily access their claims and encounter information, including cost, as well as a defined sub-set of clinical data through third-party applications of their choice.
  - **Payer-to-Payer API (1/1/22)** – Patients may request certain clinical data be shared from payer to payer to help their current payer create a cumulative health record.
  - **Medicare Data Exchange (4/1/22)** – Increases the frequency of enrollee data sharing between Medicaid and Medicare from monthly to daily.
- On the horizon:
  - **Prior Authorization (NPRM closed 1/4/21)** – Streamlines processes related to prior authorizations to reduce burden on providers and patients, leaving more time for providers to focus on patient care.

\* <https://www.cms.gov/newsroom/fact-sheets/interoperability-and-patient-access-fact-sheet>

# Where does Interoperability fit into a Medicaid Program and who are the right partners?

---

- Maryland is ~85% managed care, with carve-outs for LTSS, Behavioral Health and Dental services (require MCO providers to enroll through FFS)
- Internally, think about who manages your:
  - Provider data, provider directories
  - Claims and eligibility data
  - Recipient/Participant/Beneficiary communication and data access points
- Given the tight timeframe, Maryland reviewed current partnerships and familiarity with a diverse set of Medicaid data
- We also knew that we wanted to look beyond the APIs – where could we go in the medium term with the right partnership? How could we make a more meaningful connection with our Medicaid participants?
  - For example, while our Medicaid records generally only have EOB type information, as the State's Health Information Exchange (HIE), CRISP holds a great deal of clinical information that we could eventually make more accessible to participants

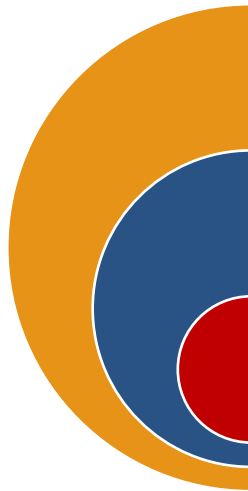
# CRISP's strong partnership with Maryland Medicaid positioned our team to assist the States in conforming with the CMS Rule



CRISP is Maryland's  
State-designated HIE



We serve as a **data utility** for the region  
connecting hospitals, care practitioners,  
policy makers, and public health  
officials with multiple streams of data



CRISP already received claims and encounter  
data from Maryland Medicaid

- DUAs in place
- Connection with data center in place

CRISP had available resources/knowledge to  
provide guidance on the rule, identify  
vendor stack options, coordinate resources

- Proven track record for advocating for patient privacy and security
- Contracting vehicle available through state-designated status

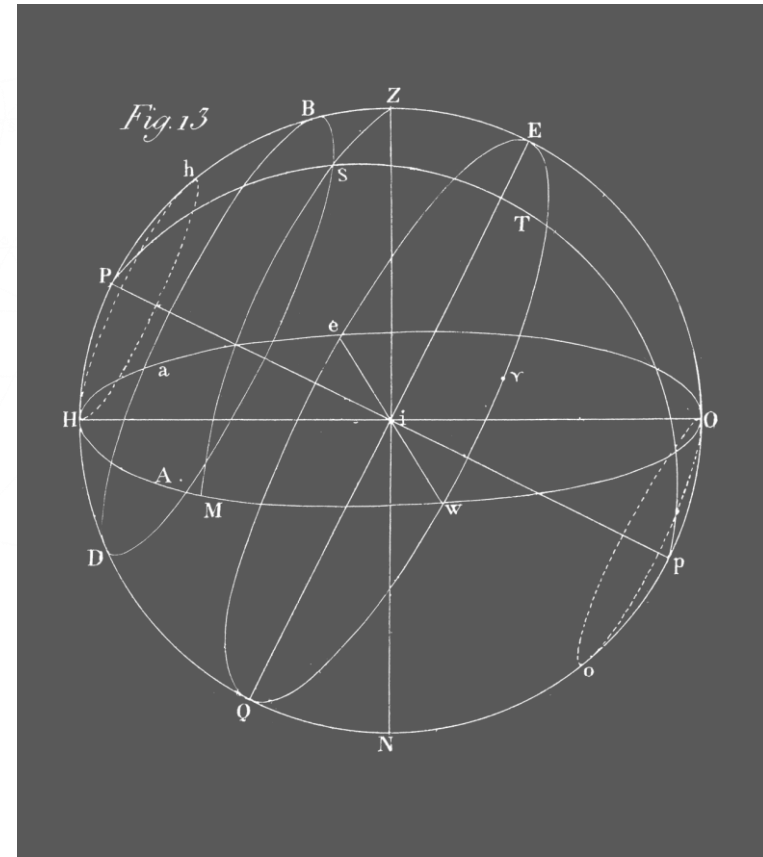
CRISP positioned with other data for the  
members for later additions to patient apps

- Maryland Medicaid looked beyond current rule requirements to think about future data to be made available to the Medicaid member

# About Leap Orbit

Leap Orbit is an established digital health company with a proven track record of building enduring assets and bringing them to market.

- Founded in 2015 in Columbia, MD
- 100% founder- and employee-owned
- Certified minority-owned business
- 30 employees – majority technical, lean operating model
- National client base covers health information exchanges (HIEs), health plans, and government agencies
- **Early leaders in implementing HL7's Fast Healthcare Interoperability Resources (FHIR) standard in the real world**



# Key Deliverables for Medicaid

---

**Practitioner API**

Live

**Organization**

Live

**Bulk FHIR API**

In flight

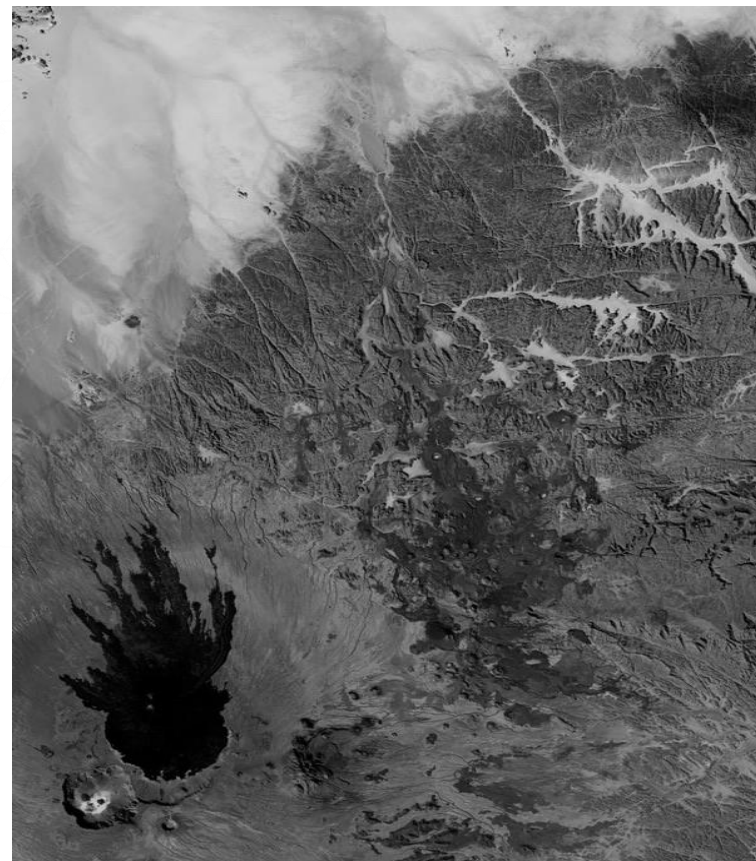
**Documentation**

Live

See it yourself: <https://health.maryland.gov/mmcp/Pages/Interoperability.aspx>  
and <https://maryland-medicaid-fhir-api.readme.io/reference>

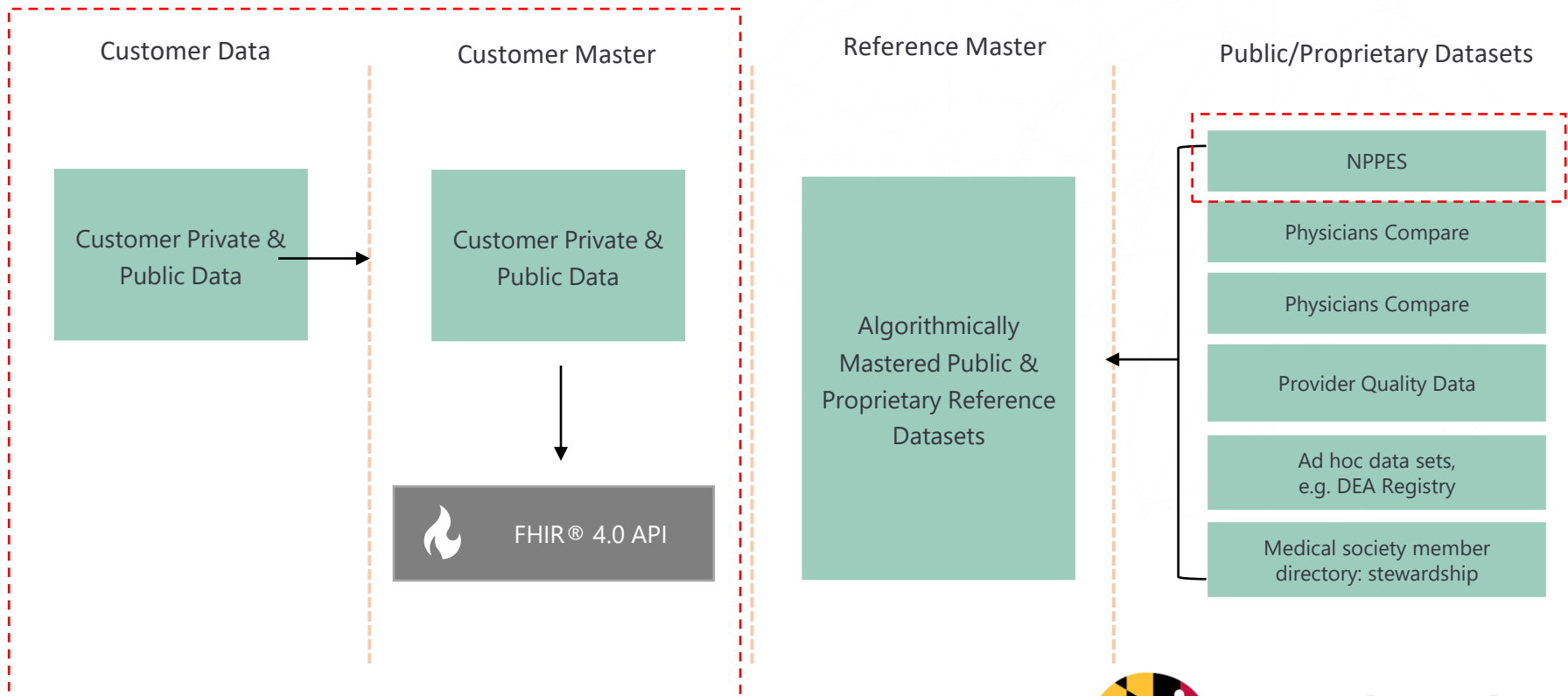
# Data-as-a-Service & The Power of Microsoft Azure

- Scalability/the cloud
- Doesn't have to be extremely expensive
- Not necessarily custom
- Benefits of shared infrastructure and, when allowed by data use terms, shared reference data
  - Directory is not hit 10,000 times per day for a range of use cases
  - Leveraged across multiple stakeholders for clinical and administrative purposes



# Benefits of a Shared Dictionary

Private data with optional data enrichment can leverage everyone's shared effort





# About Onyx

A fully owned Subsidiary of NewWave

---

- Onyx was incubated as part of the NewWave Innovation Division since 2018 by the team that implemented Blue Button 2.0 for CMS.
- Onyx was incorporated on April 1, 2019, as a sister company of NewWave focused on product development.
- SAFHIR, the Health Interoperability Platform offered by Onyx, was built jointly with Microsoft and ranked as a top FHIR provider by Gartner, and most recently awarded the:
  - **“2021 North America Enabling Technology Leadership Award for Healthcare Data Interoperability”** ~ by Frost and Sullivan.
- National commercial and federal/state customers, including the august members of this panel
- Nationally recognized Leaders in FHIR standards development and implementation
- Certified Minority Owned Business

# About Onyx

A fully owned Subsidiary of NewWave

## Products Launched



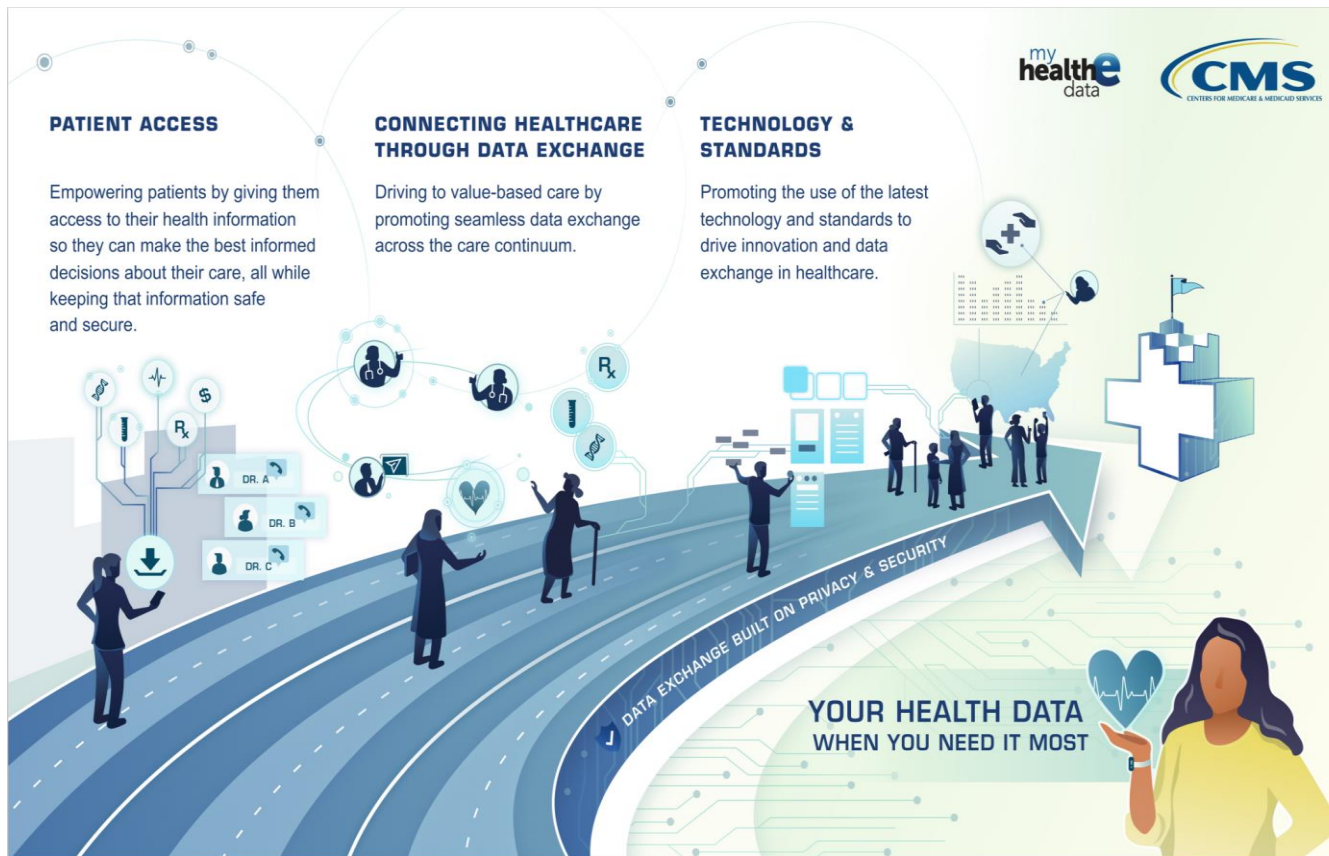
## Market Leadership

Team is involved in defining standards, solution roadmap addresses opportunities beyond CMS Mandate



# Patient Access and Provider Directory

## Just the beginning of the journey...

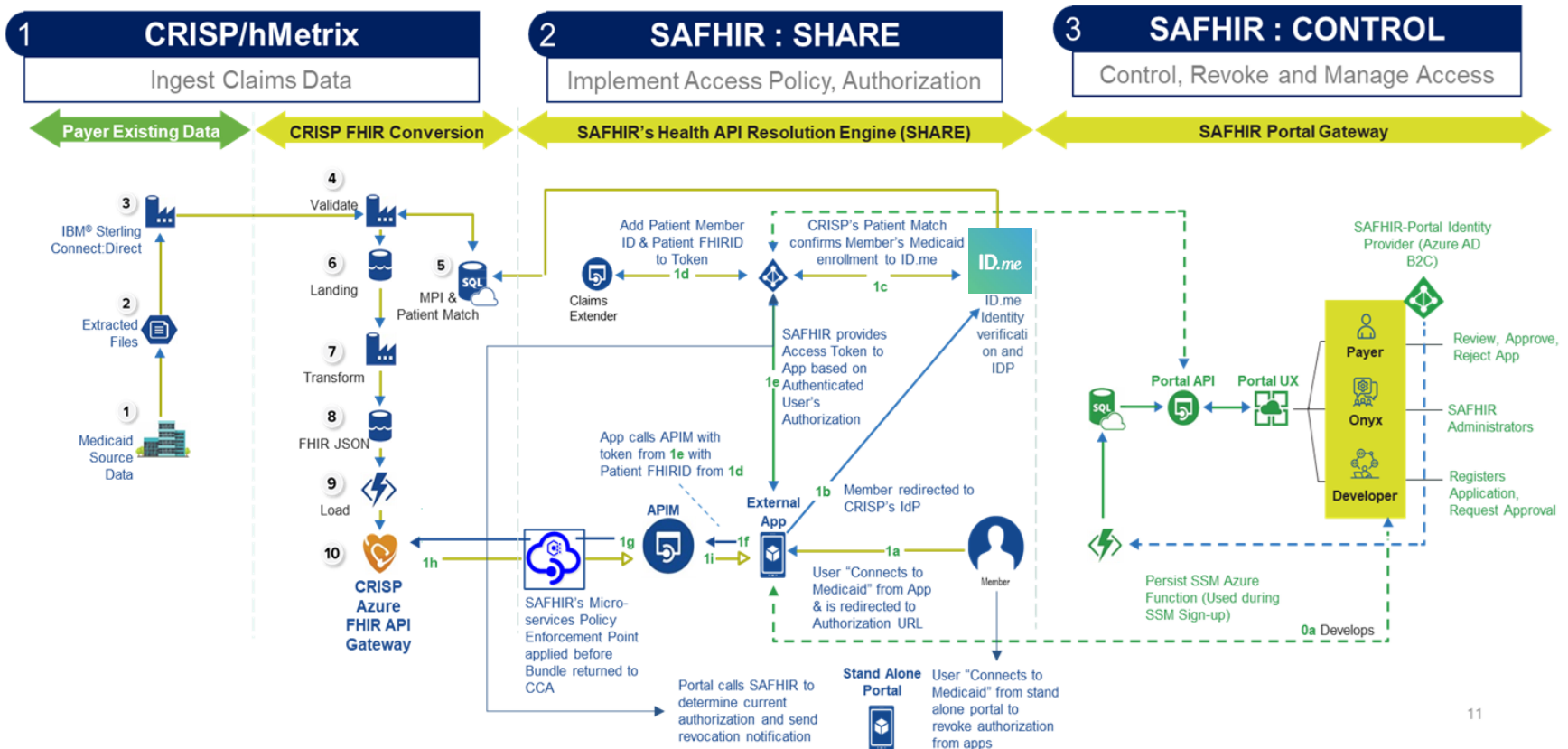


The work being done today is the beginning of a journey.

While delivering benefits today, we are also establishing the foundation to enable future use cases that:

- improve healthcare outcomes
- improve whole person outcomes
- advance societal equity.

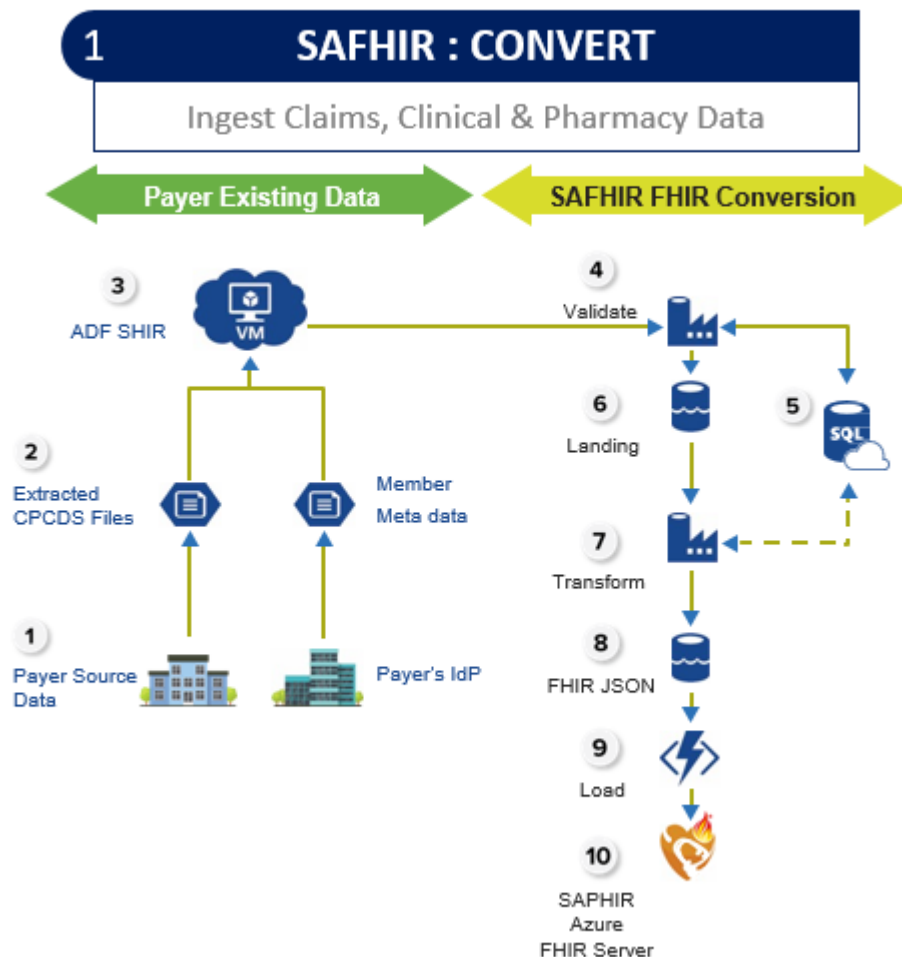
# About the SAFHIR implementation for Maryland



11

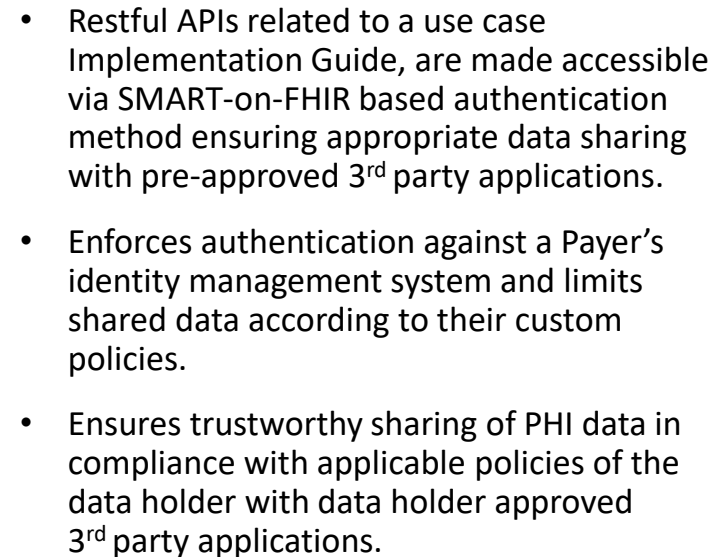
# SAFHIR Convert

## Ingesting Data from Various Sources



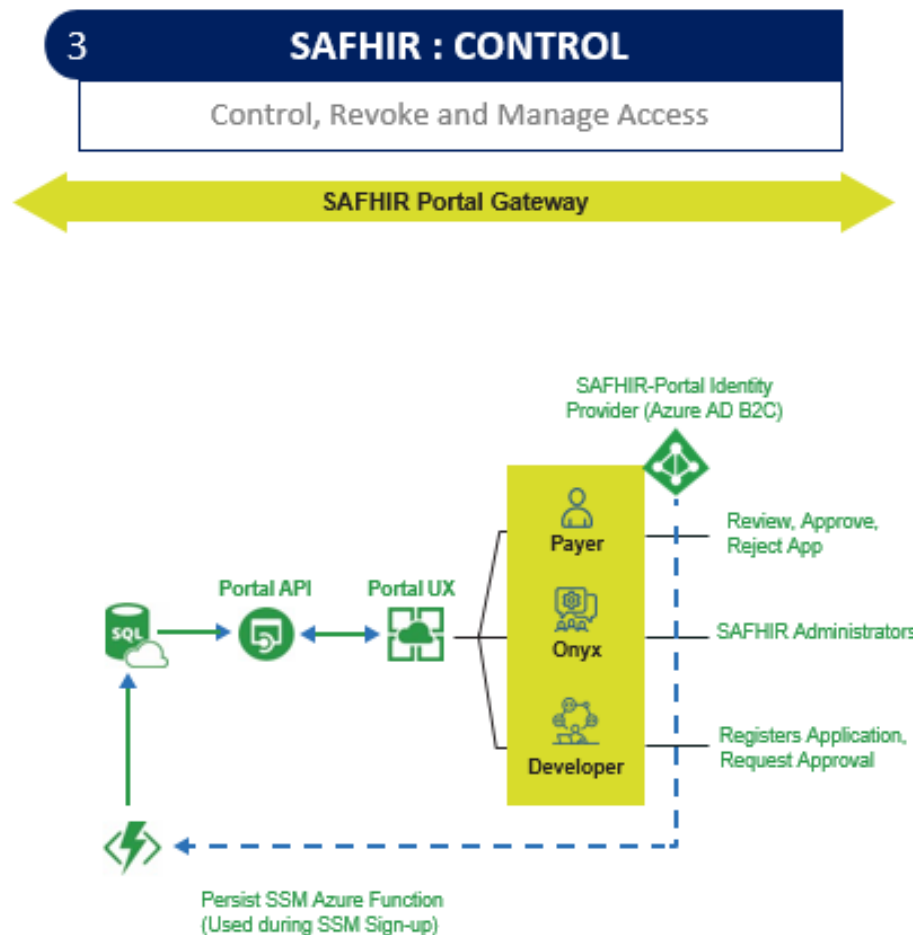
- Data ingestion is performed using Azure Data Factory which transforms data from legacy format into standards/FHIR compliant format.
- A multi-step data ingestion/transformation pipeline that is accompanied by a meta-data store capable of uploading and transforming non-FHIR source data and loading it into a FHIR server.
- Every pipeline includes client specific pre-processing pipelines that enable custom data validation and transformation as necessary.
- Reuse of a standards-based converter framework facilitates transformation from HL7 V.2, CCD and other common health data formats.
- API based ingestion of FHIR resources from other FHIR-based systems such as EMRs natively supported.





# SAFHIR Control

## Share Data based on Policies



- Data Holder self service user interface and governance layer to manage the approval of which apps are authorized to access APIs on a use case basis.
- SAFHIR Portal enables 3<sup>rd</sup> party application developers to register applications and seek data holder approval for access to one or more use cases.
- Data Holder controls who can gain access to data on a use case basis (by IG). Approve or deny 3<sup>rd</sup> party application's access to one or more use cases.
- SAFHIR Administrators' access to security and usage logs and other system information.

# Discussion Topics

---

- Use this opportunity to leverage connectivity of your data resources.
- This is more than a FHIR API; Identity verification and identity provisioning plays a major role.
- Remember scale. How will the solution work when you have 100 third party apps?
- Partnerships or a single solution
- Leverage Medicaid dollars, position for the future
- Managing Minor Consent
- Participants may need to use multiple apps to access their data from an MCO, Medicaid FFS and other insurers



# Contact Information

---

- Molly K. Marra – Director, Maryland Medicaid Provider Services  
[molly.marra@maryland.gov](mailto:molly.marra@maryland.gov)
- Mary Pohl – Senior Advisor, CRISP  
[mary.pohl@crisphealth.org](mailto:mary.pohl@crisphealth.org)
- David Finney – Partner, Leap Orbit  
[dfinney@leaporbit.com](mailto:dfinney@leaporbit.com)
- Aaron Seib – VP of Innovation, Onyx  
[aaron.seib@onyxhealth.io](mailto:aaron.seib@onyxhealth.io)